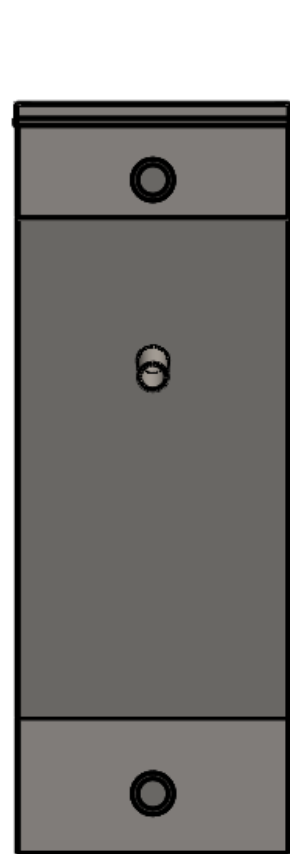


TOP VIEW

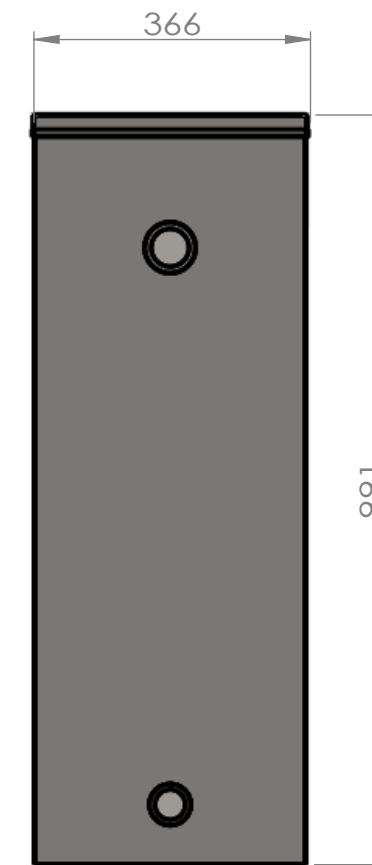
SPECIFICATIONS	
MANUFACTURER:	CLEANAWATER
MODEL:	TS 2500 SS
CONSTRUCTION MATERIAL (SHELL):	1.2MM #304 STAINLESS STEEL
CONSTRUCTION MATERIAL (LID):	1.2MM #304 STAINLESS STEEL
NOMINAL FLOW RATE:	0.69L PER SECOND (2500L/HR)
MAXIMUM LOADING:	0.83L PER SECOND (3000L/HR)
WASTE WATER INLET:	DN40 BSPF
WASTE WATER OUTLET:	DN50 BSPF
WASTE OIL OUTLET:	38MM OD TUBE
SLUDGE OUTLETS:	DN40 BSPF
WATER CAPACITY:	327 LITRES
DRY WEIGHT:	50 KG
OPERATING WEIGHT:	380 KG
PUMP:	DIAPHRAGM\HELICAL ROTOR



FRONT VIEW



RIGHT ELEVATION



REAR VIEW



TITLE:
TS 2500 SS OIL WATER SOLIDS SEPARATOR

DWG NO.	AA - 007			UNLESS OTHERWISE SPECIFIED: DIMENSIONS ARE IN MILLIMETERS SURFACE FINISH: TOLERANCES: LINEAR: ANGULAR:	MATERIAL:	STAINLESS STEEL				NAME	SIGNATURE	DATE	REVISION	PROPRIETARY AND CONFIDENTIAL THE INFORMATION CONTAINED IN THIS DRAWING IS THE SOLE PROPERTY OF CLEANAWATER. ANY REPRODUCTION IN PART OR AS A WHOLE WITHOUT THE WRITTEN PERMISSION OF CLEANAWATER IS PROHIBITED.
SHEET 1 OF 1	SCALE: n/a	A3	DO NOT SCALE DRAWING	WEIGHT:	50 KG	DRAWN	J.S	5/2013	FINISH:	DEBUR AND BREAK SHARP EDGES				
						CHK'D	R.D	5/2013						