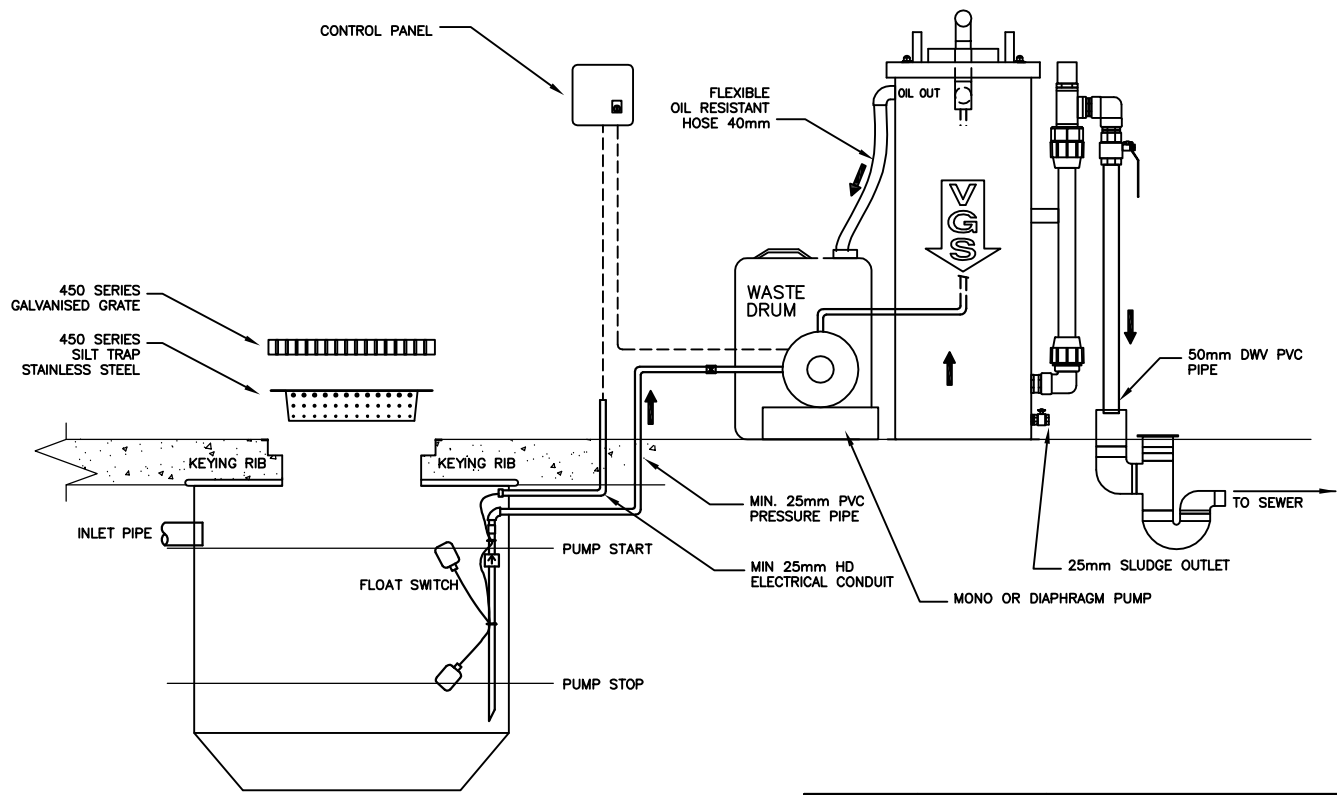




A4

# VGS Oily Water Separator Free Standing

- NOTES**
1. TO BE INSTALLED IN ACCORDANCE WITH LOCAL WATER AUTHORITY REQUIREMENTS
  2. SEPARATOR & PUMP TO BE SIZED TO MATCH PIT INFLOW
  3. FREE STANDING MODELS AVAILABLE AT FLOW RATES OF 1000-1500L/HR
  4. PIT AVAILABLE WITH GALVANISED GRATE OR GAS TIGHT GATIC LID
  5. PUMP SUCTION LINE TO BE PVC PRESSURE PIPE SIZED TO MATCH THE PUMP
  6. INSTALL CHECK VALVE IN SUCTION LINE ONLY WITH MONO PROGRESSIVE CAVITY PUMPS
  7. DO NOT INSTALL CHECK VALVE IN SUCTION FOR DIAPHRAGM PUMPS
  8. ENSURE SUCTION LINE FINISHES AT LEAST 200mm OFF THE BOTTOM OF THE PIT
  9. ENSURE PUMP STOP LEVEL IS 100mm ABOVE END OF THE SUCTION PIPE
  10. ENSURE PUMP START LEVEL IS BELOW INLET PIPE LEVEL



Itemref	Quantity	Title/Name, designation, material, dimension etc			Article No./Reference	
Designed by PE	Checked by DP	Approved by - date GW - 23/8/06	File name VXP0FP750INST	Date 23/8/06	Scale 1:25	
 PH: 0428 313 777 WWW.GPSENVIRONMENTAL.COM.AU			VGS OILY WATER SEPARATOR INSTALLATION WITH 750L FIBREGLASS PIT & UG SEWER			
			ISS-VGS-014		Revision A	Sheet 1/1